

J SECTION POLY-V SHEAVES

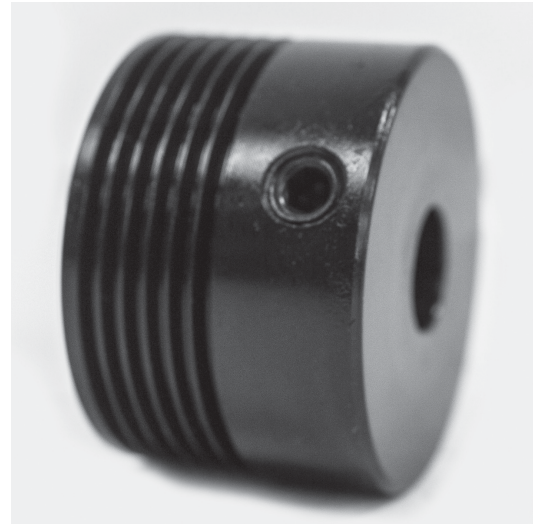
For 6 Groove J Section Belts

Finished Bores with Keyway at less than 2.000" OD

QD® Style at 2.000" OD and greater

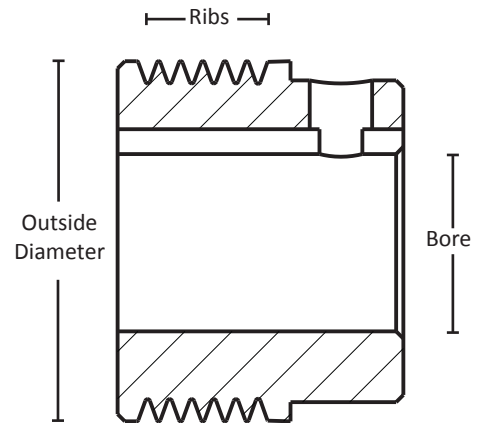
Steel

Black Oxide

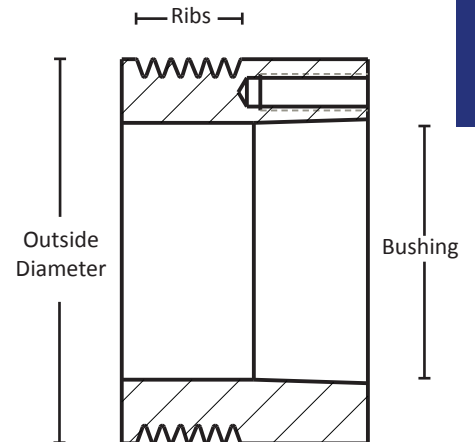


Part Number	Pitch Diameter (in)	Outside Diameter (in)	Overall Length (in)	Bore/Bushing	Ribs	Set Screw
6J150X1/2	1.530"	1.500"	1.188"	0.500"	6	1 x 5/16-18
6J150X5/8	1.530"	1.500"	1.188"	0.625"	6	1 x 5/16-18
6J150X3/4	1.530"	1.500"	1.188"	0.750"	6	1 x 5/16-18
6J150X1	1.530"	1.500"	1.188"	1.000"	6	1 x 5/16-18
6J160X1/2	1.630"	1.600"	1.188"	0.500"	6	1 x 5/16-18
6J160X5/8	1.630"	1.600"	1.188"	0.625"	6	1 x 5/16-18
6J160X3/4	1.630"	1.600"	1.188"	0.750"	6	1 x 5/16-18
6J170X1/2	1.730"	1.700"	1.188"	0.500"	6	1 x 5/16-18
6J180X1/2	1.830"	1.800"	1.188"	0.500"	6	1 x 5/16-18
6J180X5/8	1.830"	1.800"	1.188"	0.625"	6	1 x 5/16-18
6J180X3/4	1.830"	1.800"	1.188"	0.750"	6	1 x 5/16-18
6J190X1/2	1.930"	1.900"	1.188"	0.500"	6	1 x 5/16-18
6J190X5/8	1.930"	1.900"	1.188"	0.625"	6	1 x 5/16-18
6J190X7/8	1.930"	1.900"	1.188"	0.875"	6	1 x 5/16-18
6J200JA	2.030"	2.000"	-	JA	6	-
6J212JA	2.150"	2.120"	-	JA	6	-
6J224JA	2.270"	2.240"	-	JA	6	-
6J236JA	2.390"	2.360"	-	JA	6	-
6J250JA	2.530"	2.500"	-	JA	6	-
6J265JA	2.680"	2.650"	-	JA	6	-
6J280JA	2.830"	2.800"	-	JA	6	-
6J300JA	3.030"	3.000"	-	JA	6	-
6J315JA	3.180"	3.150"	-	JA	6	-
6J335JA	3.380"	3.350"	-	JA	6	-
6J450SH	4.530"	4.500"	-	SH	6	-
6J600SH	6.030"	6.000"	-	SH	6	-

Finished Bore



QD® Style



Poly V